

ᠠᠨᠢᠯᠠᠭ ᠵᠢᠭᠦᠷ ᠶᠤᠨ ᠶᠢᠨ ᠶᠢᠨ ᠶᠢᠨ ᠶᠢᠨ ᠶᠢᠨ ᠶᠢᠨ ᠶᠢᠨ ᠶᠢᠨ ᠶᠢᠨ ᠶᠢᠨ

内蒙古准格尔经济开发区管理委员会

准开管函〔2021〕82号

准格尔经济开发区管理委员会 关于开展内蒙古鄂尔多斯准格尔经济开发区 准格尔产业园区域文物影响 评估工作的函

准格尔旗文化和旅游局：

按照《鄂尔多斯市文化和旅游局关于开展工业园区区域文物影响评估工作的函》（鄂文旅〔2021〕69号）文件要求，准格尔经济开发区准格尔产业园拟开展区域文物影响评估工作，现将相关情况汇报如下：

准格尔经济开发区准格尔产业园规划控制范围为56.68平方公里，规划建设用地面积为10.91平方公里。需进行文物评估的用地规模为11平方公里。建设用地包括无机非金属材料产业1区、无机非金属材料产业2区、低阶煤综合利用区、战略性新兴产业区及物流园区。

现函请贵局审核并转报上级部门予以批复。

此函

附件：1.准格尔经济开发区准格尔产业园区域性文物影响评估范围示意图

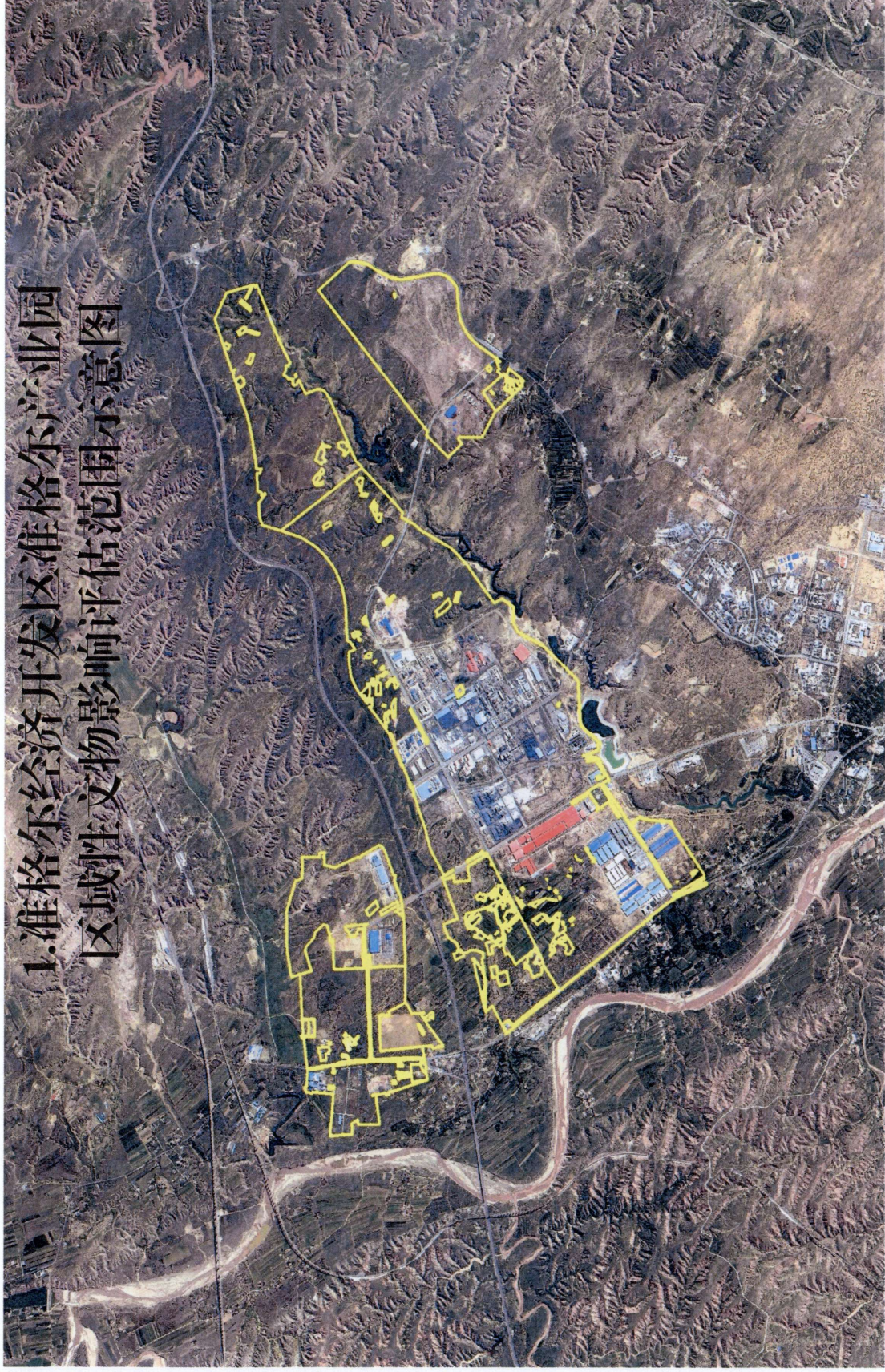
2.准格尔经济开发区准格尔产业园区域性文物影响评估范围拐点坐标及经纬度

准格尔经济开发区管理委员会

2021年8月23日



附件：



2.准格尔经济开发区准格尔产业园区域性 文物影响评估范围拐点坐标及经纬度

序号	开发区名称	区块名称(编号)	边界拐点坐标			设置界桩
			点号	X	Y	
43	内蒙古鄂尔多斯准格尔经济开发区	准格尔产业园(2)	1	37,492,047.63	4397272.955	
			2	37,492,065.89	4397189.611	
			3	37,492,076.21	4397111.824	
			4	37,492,070.65	4397067.374	
			5	37,492,057.16	4397017.367	
			6	37,492,024.61	4396966.568	
			7	37,491,985.72	4396924.499	
			8	37,491,937.30	4396893.543	
			9	37,491,884.12	4396884.811	
			10	37,491,826.97	4396883.224	
			11	37,491,797.49	4396882.112	
			12	37,491,795.89	4396880.764	
			13	37,491,794.53	4396880.74	
			14	37,491,718.07	4396875.28	
			15	37,491,652.72	4396864.833	
			16	37,491,599.86	4396850.015	
			17	37,491,594.17	4396847.366	
			18	37,491,537.16	4396820.789	
			19	37,491,493.45	4396790.471	
			20	37,491,465.62	4396767.781	
			21	37,491,447.10	4396743.205	
			22	37,491,440.18	4396752.429	
			23	37,491,358.36	4396656.708	
			24	37,491,254.82	4396497.037	
			25	37,491,254.80	4396497.065	
			26	37,491,244.89	4396483.847	
			27	37,491,240.58	4396478.093	
			28	37,491,230.62	4396464.81	
			29	37,491,229.63	4396463.488	
			30	37,491,224.49	4396456.641	

		31	37,491,205.01	4396430.648	
		32	37,491,133.56	4396335.358	
		33	37,491,130.20	4396330.872	
		34	37,491,032.90	4396201.095	
		35	37,491,019.61	4396183.373	
		36	37,491,014.26	4396176.229	
		37	37,490,995.30	4396150.947	
		38	37,490,960.31	4396190.655	
		39	37,490,712.82	4396471.509	
		40	37,490,715.02	4396478.415	
		41	37,490,713.39	4396479.327	
		42	37,490,455.69	4396623.367	
		43	37,490,453.74	4396868.267	
		44	37,490,433.67	4396882.514	
		45	37,490,386.85	4396841.43	
		46	37,490,258.40	4396987.195	
		47	37,490,461.82	4397203.931	
		48	37,490,476.79	4397219.874	
		49	37,490,476.72	4397220.004	
		50	37,490,512.54	4397210.359	
		51	37,491,909.87	4398379.236	
		52	37,492,184.16	4398053.21	
		53	37,492,190.51	4397990.504	
		54	37,492,184.16	4397915.097	
		55	37,492,161.93	4397847.629	
		56	37,492,117.48	4397769.841	
		57	37,492,106.73	4397747.828	
		58	37,492,066.68	4397665.86	
		59	37,492,053.47	4397641.415	
		60	37,492,029.37	4397596.804	
		61	37,492,028.32	4397588.974	
		62	37,492,033.75	4397582.513	
		63	37,492,029.11	4397560.939	
		64	37,492,023.47	4397542.22	
		65	37,492,021.44	4397526.662	
		66	37,492,021.44	4397465.836	
		67	37,492,030.17	4397387.254	

		68	37,492,047.63	4397272.955	
		69	37,491,253.11	4396498.349	
		70	37,491,254.61	4396497.291	
		71	37,491,253.41	4396498.754	
		72	37,491,253.11	4396498.349	
		73	37,486,184.77	4398553.88	
		74	37,486,229.45	4398552.573	
		75	37,486,229.46	4398552.883	
		76	37,486,249.53	4398552.296	
		77	37,486,285.66	4398552.379	
		78	37,486,284.56	4398518.746	
		79	37,486,283.17	4398456.225	
		80	37,486,282.55	4398456.56	
		81	37,486,278.53	4398371.39	
		82	37,486,288.99	4398370.47	
		83	37,486,304.86	4398369.075	
		84	37,486,327.10	4398367.221	
		85	37,486,327.10	4398367.182	
		86	37,486,327.15	4398367.178	
		87	37,486,327.15	4398367.115	
		88	37,486,327.25	4398367.106	
		89	37,486,327.14	4398366.764	
		90	37,486,326.55	4398332.798	
		91	37,486,326.58	4398330.362	
		92	37,486,326.49	4398328.9	
		93	37,486,326.15	4398309.178	
		94	37,486,325.27	4398309.408	
		95	37,486,321.04	4398310.513	
		96	37,486,276.21	4398322.239	
		97	37,486,275.75	4398312.552	
		98	37,486,274.87	4398312.622	
		99	37,486,274.83	4398311.817	
		100	37,486,203.27	4398317.537	
		101	37,486,202.33	4398314.878	
		102	37,486,200.68	4398312.989	
		103	37,486,177.76	4398203.746	
		104	37,486,285.98	4397953.663	

		105	37,486,275.49	4397948.936	
		106	37,486,274.46	4397946.663	
		107	37,486,276.44	4397940.048	
		108	37,486,285.70	4397930.788	
		109	37,486,304.22	4397915.574	
		110	37,486,315.47	4397891.1	
		111	37,486,315.47	4397887.694	
		112	37,486,316.87	4397888.126	
		113	37,486,321.01	4397880.096	
		114	37,486,324.34	4397873.643	
		115	37,486,347.64	4397828.466	
		116	37,486,364.18	4397796.384	
		117	37,486,381.96	4397761.92	
		118	37,486,388.86	4397750.084	
		119	37,486,398.63	4397733.344	
		120	37,486,396.98	4397728.276	
		121	37,486,389.10	4397703.976	
		122	37,486,362.11	4397680.163	
		123	37,486,333.25	4397668.617	
		124	37,486,184.77	4397609.226	
		125	37,486,116.05	4397581.738	
		126	37,486,100.18	4397575.388	
		127	37,486,107.34	4397571.608	
		128	37,486,103.78	4397563.511	
		129	37,486,108.67	4397559.679	
		130	37,486,099.73	4397549.229	
		131	37,486,093.41	4397555.243	
		132	37,486,075.18	4397561.4	
		133	37,486,064.76	4397568.533	
		134	37,486,056.52	4397565.069	
		135	37,485,901.74	4397504.744	
		136	37,485,867.97	4397491.576	
		137	37,485,863.91	4397498.655	
		138	37,485,824.71	4397484.731	
		139	37,485,784.83	4397479.52	
		140	37,485,690.08	4397466.109	
		141	37,485,689.86	4397465.618	

		142	37,485,658.94	4397464.234	
		143	37,485,658.49	4397464.214	
		144	37,485,508.22	4397457.486	
		145	37,485,508.19	4397457.485	
		146	37,485,507.80	4397457.467	
		147	37,485,406.75	4397452.943	
		148	37,485,349.41	4397450.376	
		149	37,485,224.07	4397444.764	
		150	37,485,224.04	4397444.762	
		151	37,484,845.08	4397444.08	
		152	37,484,840.87	4397443.113	
		153	37,484,803.89	4397421.205	
		154	37,484,735.36	4397380.604	
		155	37,484,732.21	4397378.74	
		156	37,484,736.41	4397287.778	
		157	37,484,737.47	4397264.903	
		158	37,484,737.90	4397255.521	
		159	37,484,738.05	4397252.342	
		160	37,484,738.62	4397240.052	
		161	37,484,742.01	4397166.481	
		162	37,484,742.89	4397147.414	
		163	37,484,685.13	4397144.282	
		164	37,484,546.06	4397136.742	
		165	37,484,537.43	4397136.274	
		166	37,484,533.73	4397136.074	
		167	37,484,533.65	4397136.074	
		168	37,484,463.07	4397077.716	
		169	37,484,462.94	4397079.618	
		170	37,484,423.29	4397045.927	
		171	37,484,420.05	4397042.149	
		172	37,484,418.53	4397040.371	
		173	37,484,417.90	4397040.371	
		174	37,484,412.18	4397040.371	
		175	37,484,411.29	4397040.371	
		176	37,484,407.41	4397040.371	
		177	37,484,401.72	4397047.688	
		178	37,484,408.30	4397052.874	

		179	37,484,396.28	4397103.195	
		180	37,484,385.38	4397148.805	
		181	37,484,397.51	4397154.599	
		182	37,484,413.50	4397162.187	
		183	37,484,403.38	4397260.167	
		184	37,484,293.29	4397241.712	
		185	37,484,281.46	4397239.73	
		186	37,484,260.78	4397236.263	
		187	37,484,171.01	4397221.215	
		188	37,484,148.16	4397217.385	
		189	37,484,131.08	4397214.522	
		190	37,484,131.07	4397214.506	
		191	37,484,073.12	4397207.398	
		192	37,484,073.12	4397207.41	
		193	37,484,073.08	4397207.406	
		194	37,483,963.99	4397578.378	
		195	37,483,963.49	4397581.181	
		196	37,483,963.03	4397581.123	
		197	37,483,954.00	4397624.774	
		198	37,483,936.68	4397622.054	
		199	37,483,936.52	4397618.528	
		200	37,483,930.94	4397617.544	
		201	37,483,926.35	4397656.498	
		202	37,483,946.58	4397660.663	
		203	37,483,943.27	4397676.671	
		204	37,483,927.46	4397757.387	
		205	37,483,928.19	4397757.502	
		206	37,483,926.87	4397766.762	
		207	37,483,921.73	4397801.646	
		208	37,483,918.75	4397801.252	
		209	37,483,924.81	4397766.209	
		210	37,483,906.56	4397761.295	
		211	37,483,892.47	4397757.502	
		212	37,483,858.08	4397754.194	
		213	37,483,851.39	4397753.985	
		214	37,483,838.74	4397752.31	
		215	37,483,819.56	4397749.768	

		216	37,483,637.43	4397725.639	
		217	37,483,638.43	4397827.895	
		218	37,483,638.52	4397836.525	
		219	37,483,639.65	4397951.818	
		220	37,483,685.25	4397959.072	
		221	37,483,644.23	4398018.698	
		222	37,483,545.55	4398014.771	
		223	37,483,537.87	4398014.465	
		224	37,483,537.81	4398015.169	
		225	37,483,536.57	4398015.107	
		226	37,483,536.53	4398015.1	
		227	37,483,536.37	4398017.287	
		228	37,483,526.10	4398159.557	
		229	37,483,521.51	4398213.92	
		230	37,483,520.93	4398213.961	
		231	37,483,519.97	4398230.842	
		232	37,483,519.16	4398244.975	
		233	37,483,518.82	4398251.003	
		234	37,483,550.27	4398248.774	
		235	37,483,586.02	4398246.24	
		236	37,483,708.79	4398235.657	
		237	37,483,743.11	4398232.75	
		238	37,483,747.10	4398232.413	
		239	37,483,766.28	4398230.789	
		240	37,483,824.77	4398225.836	
		241	37,483,840.02	4398224.544	
		242	37,483,895.37	4398219.513	
		243	37,483,938.97	4398215.548	
		244	37,483,939.03	4398216.52	
		245	37,483,944.80	4398310.269	
		246	37,483,947.42	4398344.227	
		247	37,483,949.57	4398372.005	
		248	37,483,952.20	4398406.049	
		249	37,483,952.20	4398433.036	
		250	37,483,946.91	4398440.974	
		251	37,483,943.74	4398444.678	
		252	37,483,944.80	4398466.903	

		253	37,483,949.03	4398467.961	
		254	37,483,951.67	4398513.47	
		255	37,483,980.55	4398511.607	
		256	37,484,000.89	4398510.295	
		257	37,484,005.35	4398510.129	
		258	37,484,005.82	4398515.489	
		259	37,484,014.22	4398514.419	
		260	37,484,013.70	4398509.369	
		261	37,484,014.12	4398502.357	
		262	37,484,027.87	4398499.182	
		263	37,484,028.77	4398503.985	
		264	37,484,038.64	4398503.185	
		265	37,484,047.12	4398502.497	
		266	37,484,047.36	4398506.057	
		267	37,484,154.35	4398496.537	
		268	37,484,155.25	4398495.757	
		269	37,484,155.54	4398495.793	
		270	37,484,180.29	4398498.84	
		271	37,484,191.92	4398500.273	
		272	37,484,358.74	4398520.821	
		273	37,484,477.05	4398535.392	
		274	37,484,479.08	4398547.612	
		275	37,484,484.90	4398556.608	
		276	37,484,489.14	4398560.841	
		277	37,484,496.54	4398564.016	
		278	37,484,503.95	4398566.133	
		279	37,484,506.74	4398566.347	
		280	37,484,510.83	4398566.662	
		281	37,484,514.54	4398562.958	
		282	37,484,517.51	4398539.993	
		283	37,484,648.97	4398552.991	
		284	37,484,653.85	4398549.224	
		285	37,484,653.85	4398549.395	
		286	37,484,674.68	4398550.619	
		287	37,484,674.45	4398555.139	
		288	37,485,118.93	4398578.987	
		289	37,485,106.81	4398623.181	

		290	37,485,106.81	4398623.181	
		291	37,485,099.07	4398651.404	
		292	37,485,097.94	4398655.54	
		293	37,485,093.96	4398670.049	
		294	37,485,131.72	4398676.65	
		295	37,485,131.86	4398676.674	
		296	37,485,163.77	4398682.251	
		297	37,485,178.48	4398684.822	
		298	37,485,199.83	4398688.554	
		299	37,485,229.84	4398693.8	
		300	37,485,275.16	4398701.722	
		301	37,485,279.14	4398702.418	
		302	37,485,335.11	4398712.202	
		303	37,485,359.29	4398716.428	
		304	37,485,382.37	4398716.9	
		305	37,485,387.11	4398716.997	
		306	37,485,409.89	4398717.462	
		307	37,485,417.84	4398717.625	
		308	37,485,423.95	4398717.749	
		309	37,485,482.87	4398718.954	
		310	37,485,493.19	4398719.165	
		311	37,485,512.88	4398719.567	
		312	37,485,589.16	4398721.126	
		313	37,485,619.35	4398721.743	
		314	37,485,718.94	4398723.778	
		315	37,485,740.17	4398724.212	
		316	37,485,814.89	4398700.951	
		317	37,485,839.16	4398693.397	
		318	37,485,887.30	4398678.409	
		319	37,485,892.49	4398676.794	
		320	37,485,904.68	4398672.998	
		321	37,485,912.60	4398670.533	
		322	37,486,046.78	4398628.763	
		323	37,486,057.80	4398594.457	
		324	37,486,069.76	4398557.243	
		325	37,486,106.24	4398556.176	
		326	37,486,184.77	4398553.88	

		327	37,491,017.78	4398594.664	
		328	37,490,880.26	4398521.917	
		329	37,490,917.04	4398422.654	
		330	37,490,926.32	4398389.07	
		331	37,490,926.43	4398364.714	
		332	37,490,911.54	4398320.361	
		333	37,490,897.14	4398300.529	
		334	37,490,832.70	4398255.747	
		335	37,490,619.02	4398161.549	
		336	37,490,354.86	4398045.099	
		337	37,490,345.14	4398040.815	
		338	37,490,218.86	4397985.144	
		339	37,490,148.71	4397916.419	
		340	37,489,700.48	4397477.256	
		341	37,489,657.56	4397492.004	
		342	37,489,632.27	4397440.025	
		343	37,489,623.75	4397422.501	
		344	37,489,593.09	4397359.472	
		345	37,489,510.20	4397256.711	
		346	37,489,499.39	4397227.55	
		347	37,489,353.08	4396956.65	
		348	37,489,196.88	4396796.523	
		349	37,489,152.98	4396762.567	
		350	37,488,941.36	4396598.878	
		351	37,488,844.18	4396523.71	
		352	37,488,802.05	4396491.126	
		353	37,488,843.11	4396406.214	
		354	37,488,767.11	4396284.213	
		355	37,488,766.66	4396284.216	
		356	37,488,766.20	4396283.486	
		357	37,488,606.20	4396284.487	
		358	37,488,518.22	4396236.961	
		359	37,488,370.94	4395955.412	
		360	37,488,371.40	4395955.23	
		361	37,488,371.26	4395955.041	
		362	37,488,157.68	4395719.328	
		363	37,488,157.67	4395719.308	

		364	37,488,149.16	4395709.923	
		365	37,488,130.16	4395688.955	
		366	37,488,047.65	4395597.889	
		367	37,488,044.01	4395594.134	
		368	37,488,043.21	4395593.244	
		369	37,488,031.14	4395592.514	
		370	37,487,780.52	4395577.345	
		371	37,487,786.20	4395573.166	
		372	37,487,588.38	4395561.195	
		373	37,487,423.40	4395361.818	
		374	37,487,421.66	4395363.09	
		375	37,487,416.52	4395356.88	
		376	37,487,396.15	4395371.793	
		377	37,487,404.16	4395375.902	
		378	37,487,393.85	4395383.447	
		379	37,487,390.18	4395381.116	
		380	37,487,391.06	4395378.7	
		381	37,487,388.29	4395377.546	
		382	37,487,385.79	4395376.505	
		383	37,487,384.26	4395379.14	
		384	37,487,362.30	4395369.478	
		385	37,487,352.86	4395382.982	
		386	37,487,342.32	4395379.469	
		387	37,487,334.85	4395391.326	
		388	37,487,344.07	4395397.035	
		389	37,487,330.12	4395420.141	
		390	37,487,319.32	4395438.017	
		391	37,487,311.17	4395443.983	
		392	37,487,309.66	4395454.006	
		393	37,487,304.55	4395462.47	
		394	37,487,306.86	4395472.594	
		395	37,487,297.42	4395535.274	
		396	37,487,297.40	4395535.103	
		397	37,487,292.11	4395504.428	
		398	37,487,291.34	4395499.995	
		399	37,487,285.49	4395466.395	
		400	37,487,280.86	4395434.314	

		401	37,487,274.91	4395404.879	
		402	37,487,269.95	4395391.319	
		403	37,487,266.69	4395384.531	
		404	37,487,265.98	4395383.051	
		405	37,487,258.37	4395371.806	
		406	37,487,250.77	4395364.53	
		407	37,487,240.51	4395358.907	
		408	37,487,232.24	4395354.608	
		409	37,487,224.86	4395350.729	
		410	37,487,212.73	4395344.355	
		411	37,487,183.30	4395328.48	
		412	37,487,141.96	4395306.652	
		413	37,487,084.41	4395276.556	
		414	37,487,075.15	4395272.256	
		415	37,487,044.56	4395258.067	
		416	37,487,030.15	4395305.994	
		417	37,487,020.85	4395310.297	
		418	37,487,019.84	4395310.768	
		419	37,487,008.27	4395316.125	
		420	37,486,943.79	4395269.025	
		421	37,486,928.90	4395258.149	
		422	37,486,859.04	4395207.117	
		423	37,486,752.68	4395130.388	
		424	37,486,607.69	4395036.196	
		425	37,486,602.25	4395032.386	
		426	37,486,610.75	4395021.22	
		427	37,486,610.79	4395021.159	
		428	37,486,610.82	4395021.176	
		429	37,486,678.19	4394923.763	
		430	37,486,676.03	4394917.645	
		431	37,486,667.61	4394893.763	
		432	37,486,660.76	4394863.799	
		433	37,486,651.56	4394799.484	
		434	37,486,646.05	4394735.813	
		435	37,486,645.12	4394719.408	
		436	37,486,645.09	4394719.392	
		437	37,486,645.12	4394719.358	

		438	37,486,645.04	4394716.372	
		439	37,486,647.91	4394712.144	
		440	37,486,649.10	4394710.391	
		441	37,486,644.81	4394706.529	
		442	37,486,643.77	4394663.086	
		443	37,486,645.08	4394607.031	
		444	37,486,641.79	4394600.372	
		445	37,486,644.58	4394595.934	
		446	37,486,644.73	4394595.694	
		447	37,486,620.66	4394579.532	
		448	37,486,620.52	4394579.672	
		449	37,486,616.98	4394577.226	
		450	37,486,612.23	4394583.697	
		451	37,486,209.91	4394298.234	
		452	37,486,147.78	4394254.145	
		453	37,486,118.21	4394233.162	
		454	37,486,092.69	4394240.3	
		455	37,486,073.28	4394230.416	
		456	37,486,051.29	4394219.216	
		457	37,486,040.74	4394213.84	
		458	37,486,032.93	4394209.866	
		459	37,486,013.79	4394200.979	
		460	37,486,011.47	4394207.033	
		461	37,485,986.07	4394276.486	
		462	37,485,959.76	4394345.406	
		463	37,485,959.75	4394345.412	
		464	37,485,957.88	4394350.296	
		465	37,485,927.33	4394428.084	
		466	37,485,903.51	4394485.631	
		467	37,485,890.88	4394512.438	
		468	37,485,880.89	4394533.653	
		469	37,485,863.43	4394562.625	
		470	37,485,830.09	4394616.997	
		471	37,485,780.23	4394685.742	
		472	37,485,777.70	4394689.228	
		473	37,485,734.84	4394747.966	
		474	37,485,713.57	4394775.686	

		475	37,485,673.32	4394828.135	
		476	37,485,649.54	4394860.443	
		477	37,485,644.12	4394867.803	
		478	37,485,604.67	4394921.401	
		479	37,485,567.36	4394972.201	
		480	37,485,523.31	4395030.541	
		481	37,485,468.93	4395103.964	
		482	37,485,405.31	4395189.821	
		483	37,485,346.11	4395269.527	
		484	37,485,314.36	4395312.522	
		485	37,485,258.14	4395386.274	
		486	37,485,224.73	4395431.835	
		487	37,485,220.17	4395438.05	
		488	37,485,196.29	4395470.611	
		489	37,485,140.40	4395544.363	
		490	37,485,074.58	4395633.991	
		491	37,485,018.03	4395709.728	
		492	37,484,958.50	4395788.773	
		493	37,484,919.47	4395843.343	
		494	37,484,852.33	4395932.64	
		495	37,484,797.10	4396007.385	
		496	37,484,739.22	4396083.784	
		497	37,484,695.24	4396144.969	
		498	37,484,651.58	4396202.846	
		499	37,484,625.70	4396237.426	
		500	37,484,616.65	4396249.525	
		501	37,484,614.21	4396252.787	
		502	37,484,563.28	4396320.586	
		503	37,484,549.39	4396338.776	
		504	37,484,548.06	4396343.076	
		505	37,484,535.74	4396361.563	
		506	37,484,554.59	4396372.494	
		507	37,484,576.14	4396380.452	
		508	37,484,581.30	4396382.355	
		509	37,484,607.63	4396398.367	
		510	37,484,620.45	4396406.168	
		511	37,484,620.71	4396405.796	

--	--

512	37,484,803.66	4396508.937	
513	37,484,751.14	4396582.246	
514	37,484,746.96	4396588.08	
515	37,484,747.57	4396588.201	
516	37,484,785.96	4396598.046	
517	37,485,222.94	4396710.107	
518	37,485,260.25	4396719.676	
519	37,485,269.43	4396722.03	
520	37,485,286.32	4396726.362	
521	37,485,331.48	4396737.943	
522	37,485,324.21	4396759.422	
523	37,485,307.18	4396810.941	
524	37,485,307.18	4396810.947	
525	37,485,304.88	4396815.75	
526	37,485,265.91	4396897.042	
527	37,485,262.22	4396908.461	
528	37,485,317.46	4396926.687	
529	37,485,323.99	4396928.929	
530	37,485,367.95	4396944.022	
531	37,485,403.08	4396956.708	
532	37,485,445.42	4396971.999	
533	37,485,460.58	4396977.471	
534	37,485,480.41	4396984.635	
535	37,485,482.59	4396985.422	
536	37,485,557.74	4397012.562	
537	37,485,591.65	4397025.427	
538	37,485,592.98	4397026.352	
539	37,485,597.22	4397027.54	
540	37,485,607.14	4397030.314	
541	37,485,616.62	4397027.732	
542	37,485,671.44	4396886.699	
543	37,486,029.19	4397025.765	
544	37,486,050.62	4397034.096	
545	37,486,084.29	4397047.184	
546	37,486,088.90	4397039.759	
547	37,486,094.43	4397030.845	
548	37,486,101.11	4397033.967	

		549	37,486,111.82	4397038.965	
		550	37,486,298.19	4397145.753	
		551	37,486,304.87	4397149.056	
		552	37,486,304.90	4397149.07	
		553	37,486,353.03	4397172.862	
		554	37,486,410.77	4397193.071	
		555	37,486,436.83	4397200.673	
		556	37,486,436.84	4397200.679	
		557	37,486,580.86	4397242.691	
		558	37,486,800.10	4397320.002	
		559	37,486,801.56	4397317.516	
		560	37,486,801.59	4397317.525	
		561	37,486,800.15	4397319.961	
		562	37,486,938.16	4397368.632	
		563	37,486,953.38	4397374.302	
		564	37,486,953.80	4397374.149	
		565	37,486,957.79	4397375.557	
		566	37,486,975.05	4397368.887	
		567	37,486,975.03	4397368.909	
		568	37,486,966.67	4397382.908	
		569	37,486,967.99	4397386.877	
		570	37,486,974.60	4397392.168	
		571	37,486,984.53	4397396.798	
		572	37,486,991.14	4397402.752	
		573	37,486,998.42	4397404.736	
		574	37,487,007.97	4397389.366	
		575	37,487,017.41	4397400.501	
		576	37,487,018.67	4397400.295	
		577	37,487,018.84	4397400.869	
		578	37,487,028.95	4397405.582	
		579	37,487,030.32	4397409.494	
		580	37,487,038.76	4397413.335	
		581	37,487,100.69	4397441.511	
		582	37,487,162.61	4397469.687	
		583	37,487,164.54	4397470.464	
		584	37,487,169.06	4397472.284	
		585	37,487,192.00	4397481.525	

		586	37,487,211.02	4397490.386	
		587	37,487,247.09	4397507.186	
		588	37,487,258.20	4397508.509	
		589	37,487,299.14	4397528.508	
		590	37,487,299.26	4397528.567	
		591	37,487,300.04	4397528.95	
		592	37,487,312.10	4397534.84	
		593	37,487,369.65	4397562.952	
		594	37,487,390.56	4397571.086	
		595	37,487,401.93	4397575.505	
		596	37,487,405.37	4397576.843	
		597	37,487,409.87	4397568.984	
		598	37,487,413.51	4397562.648	
		599	37,487,413.51	4397562.642	
		600	37,487,513.19	4397609.071	
		601	37,487,504.62	4397623.639	
		602	37,487,503.09	4397626.236	
		603	37,487,593.98	4397695.58	
		604	37,487,707.18	4397781.94	
		605	37,487,778.16	4397840.51	
		606	37,487,805.82	4397863.344	
		607	37,487,836.56	4397888.705	
		608	37,487,848.47	4397898.537	
		609	37,487,851.51	4397901.047	
		610	37,487,894.27	4397931.462	
		611	37,487,900.60	4397935.962	
		612	37,487,975.80	4397989.45	
		613	37,488,080.53	4398033.224	
		614	37,488,217.94	4398056.359	
		615	37,488,217.95	4398056.36	
		616	37,488,286.62	4398060.76	
		617	37,488,429.01	4398069.882	
		618	37,488,555.99	4398078.017	
		619	37,488,744.82	4398089.639	
		620	37,488,797.74	4398094.755	
		621	37,488,884.92	4398108.487	
		622	37,488,963.18	4398125.295	

		623	37,489,048.11	4398159.216	
		624	37,489,098.63	4398183.58	
		625	37,489,125.45	4398198.284	
		626	37,489,162.64	4398221.117	
		627	37,489,275.05	4398312.755	
		628	37,489,366.66	4398415.917	
		629	37,489,461.58	4398574.235	
		630	37,489,461.58	4398574.239	
		631	37,489,461.59	4398574.236	
		632	37,489,525.60	4398785.341	
		633	37,489,525.60	4398785.345	
		634	37,489,581.88	4398988.995	
		635	37,489,661.80	4399012.018	
		636	37,489,662.35	4399012.065	
		637	37,489,799.69	4399022.581	
		638	37,489,868.09	4399027.818	
		639	37,489,923.56	4399032.065	
		640	37,490,023.11	4399039.687	
		641	37,490,094.44	4399045.148	
		642	37,490,108.52	4399046.227	
		643	37,490,138.98	4399049.705	
		644	37,490,236.16	4399060.802	
		645	37,490,476.50	4399100.586	
		646	37,490,666.06	4399147.213	
		647	37,491,075.31	4399296.726	
		648	37,491,103.42	4399306.995	
		649	37,491,150.65	4399324.25	
		650	37,491,343.23	4399392.712	
		651	37,491,346.60	4399393.911	
		652	37,491,620.92	4399491.433	
		653	37,491,882.42	4399363.311	
		654	37,491,965.76	4399070.07	
		655	37,491,972.02	4399048.067	
		656	37,491,962.31	4399043.839	
		657	37,491,423.16	4398809.121	
		658	37,491,184.11	4398682.659	
		659	37,491,109.61	4398643.246	

			660	37,491,081.69	4398628.474	
			661	37,491,059.54	4398616.76	
			662	37,491,017.78	4398594.664	